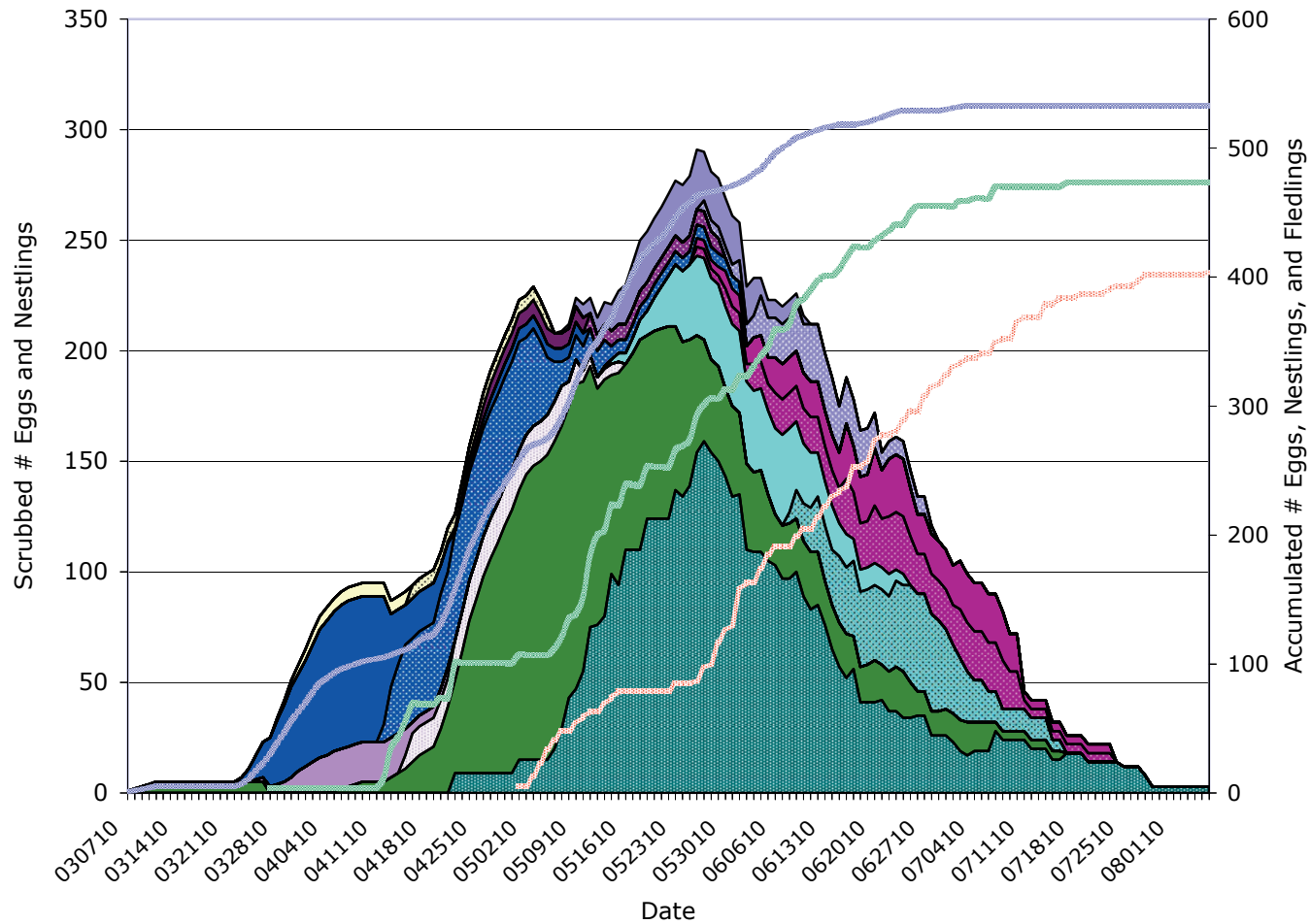


2010 Passerine Breeding Cycle



- ATFL Eggs
- ATFL Nestlings
- CBCH Eggs
- CBCH Nestlings
- HOWR Eggs
- HOWR Nestlings
- OATI Eggs
- OATI Nestlings
- TRES Eggs
- TRES Nestlings
- VGSW Eggs
- VGSW Nestlings
- WBNU Eggs
- WBNU Nestlings
- WEBL Eggs
- WEBL Nestlings
- Accum Eggs
- Accum Nestlings
- Accum Fledglings

August 22, 2010

Prepared by Lee Pauser